

# Typing Pal<sup>3.0</sup>™



**A quick and easy way  
to learn keyboard typing!**

- Accelerated Course
- Full courses integrating the use of:
  - Internet
  - Email
  - The number pad
  - Spanish for the office
- Games and dictations

**DeMarque**

# Typing Pal<sup>3.0</sup><sup>TM</sup>

A **quick** and **easy** way to learn keyboard typing!

- Adapts automatically to all types of keyboards.
- Evaluates your progress and gives you made-to-measure exercises
- Helps improve your speed and precision.
- Displays the keyboard characters
- Gathers your typing statistics while you work with your usual software.

## Navigation

Typing Pal is renowned for being easy to navigate and for the speed with which users learn how to operate it.

## How it Works

Typing Pal offers a fully customized learning scenario that suits beginners as well as those with more keyboard experience. You decide which sections of the keyboard to learn and set your own speed and precision objectives. You're in a hurry? Take the accelerated course and become a keyboard pro in no time. Do you need to use SPANISH at work? Typing Pal offers you a variety of practice material in Spanish. Also take advantage of specialized courses that will help you navigate on the INTERNET with ease and become more efficient with EMAIL and CHAT lines. The lessons are accompanied by amusing cartoon sequences that will keep your attention on the screen, rather than on the keyboard.

## Follow-up

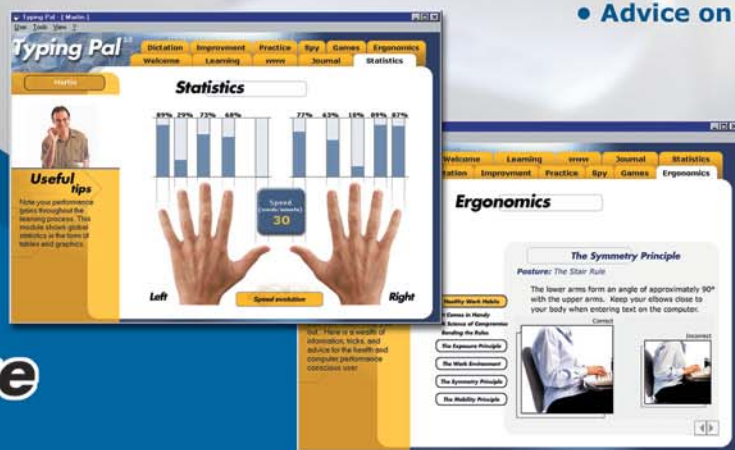
For those who want to keep track of their progress, Typing Pal offers to evaluate user-performance with simple and detailed statistics. The software applies these statistics to come up with specially designed exercises that will help users improve on their weak points.



## Characteristics

For a learning method that is both effective and fun, Typing Pal offers:

- 80 exercises
- 65 practice paragraphs in English and 20 in Spanish
- 20 oral dictations
- 2 games for progressing while you have fun
- A Spy that evaluates your performance while you work with your usual software (word-processing, email, etc.)
- Made-to-measure improvement exercises
- Advice on ergonomics



## System Requirements

PC

Pentium 200 MHz or higher  
Windows 95/98, Me, NT4, 2000, XP  
32 MB of RAM (64 MB recommended)  
Sound card  
CD-ROM drive  
Resolution of 800 x 600

**DeMarque**

www.demarque.com  
info@demarque.com

Telephone: 1 418 658-9143 1 888 458-9143

© De Marque Inc., 2001

Except when authorized, renting, loan, public use, and use at more than one station is forbidden.

